

FronD

ANDOVER FABRICS

a
100
years



Palm Beach Quilt designed by: **Janet Houts**

Quilt Size: **79" x 95"** • Skill Level: **Confident Beginner**

andover

•
•
• makower uk
•

Free Pattern Download Available

1384 Broadway New York, NY 10018
Tel. (800) 223-5678 • andoverfabrics.com

5/20/22

Palm Beach Quilt

Introducing Andover Fabrics new collection: **FROND** by Andover Fabrics

Quilt designed by Janet Houts



Quilt finishes 79" x 95"

Like a cool breeze among the palm trees, this lovely bed-size quilt will bring comfort and contentment to all who see it. The contrast between dark and light is tempered with a scattering of gray. The quilt goes together easily using a quick stitch-and-flip method of piecing.

Fabric Requirements

		Yardage	Fabric	
Fabric A	border	2½ yards	481-C	
Fabric B	sash	1 yard	487-LC	
9 Medium	blocks	½ yard ea.	481-L	
	481-LC	482-LC	483-Y	484-C
	484-Y	485-Y	487-Y	488-Y
9 Dark	blocks	fat ¼ ea.	482-C	
	483-C	484-K	485-C	485-K
	486-K	486-Y	487-K	488-K
3 Light	blocks	½ yard ea.		
	483-L	486-L	488-L	
Binding		¾ yard	486-Y	
Backing		7½ yards	482-Y	

Cutting Directions

Note: Read assembly directions before cutting patches. All measurements are cut sizes and include ¼" seam allowances. A fat ¼ is an 18" x 20"-22" cut. Borders are cut the exact lengths required plus ¼" seam allowances. WOF designates the width of fabric from selvedge to selvedge (approximately 42" wide).

Fabric A

Cut 2 side borders 7½" x 81½" cut lengthwise

Cut 2 top/bottom borders 7½" x 79½" cut lengthwise

Fabric B

Cut (22) strips 1½" x WOF, pieced to make the following:

(2) side inner borders 1½" x 79½"

(2) t/b inner borders 1½" x 65½"

(4) long sash 1½" x 63½"

(15) short sash 1½" x 15½"

9 Medium Needed: (120) rectangles total

From each of 6:

Cut (13) rectangles 5½" x 8"

From each of 3:

Cut (14) rectangles 5½" x 8"

9 Dark Needed: (60) squares total

From each of 6:

Cut (7) squares 5½"

From each of 3:

Cut (6) squares 5½"

3 Light From each:

Cut (20) squares 5½"

Binding

Cut (9) strips 2½" x WOF for binding

Backing Cut (3) lengths 36" x 89", pieced to fit quilt top with overlap on all sides

Making the Quilt

1. The blocks use a quick method that results in perfect pieced rectangles. Draw a diagonal line on the back side of each light and each dark square. Position a marked square as shown on one end of a medium $5\frac{1}{2}'' \times 8''$ rectangle (Diagram 1). Stitch on the marked diagonal line. Cut away the excess fabric. Press the corner up. Be sure that the rectangle measures $5\frac{1}{2}'' \times 8''$ after pressing. Make 20 light/medium rectangles and 40 dark/medium rectangles as shown.
2. Likewise, position a marked square on the opposite end of a medium rectangle as shown in Diagram 2. Stitch, trim, and press. Make 40 light/medium rectangles and 20 dark/medium rectangles.
3. Referring to the Block diagram, join the pieced rectangles in the order shown, noting placement of the dark triangles. Make 20 blocks.
4. Position 4 blocks and 3 short sashes in each of 5 rows as shown in the Quilt Diagram. Join the blocks and sashes. Sew the Fabric B long sashes between the rows.
5. Sew Fabric B borders to the sides, and then to the top and bottom. Finally, sew Fabric A borders to the sides, and then to the top and bottom.

Finishing the Quilt

6. Layer the quilt with batting and backing and baste. Quilt in the ditch around borders, sashes, and patches. Quilt around the printed motifs in the outer border or as desired. Bind to finish the quilt.

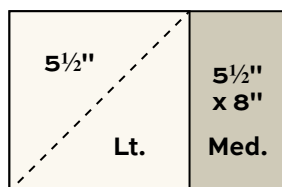


Diagram 1

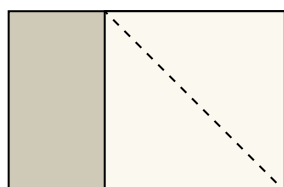
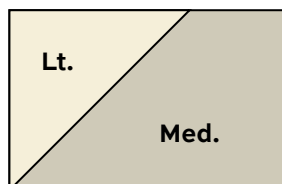
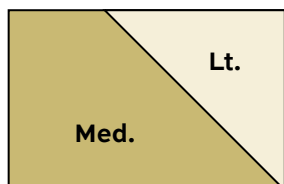


Diagram 2



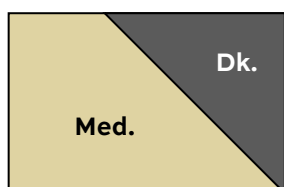
Make 20



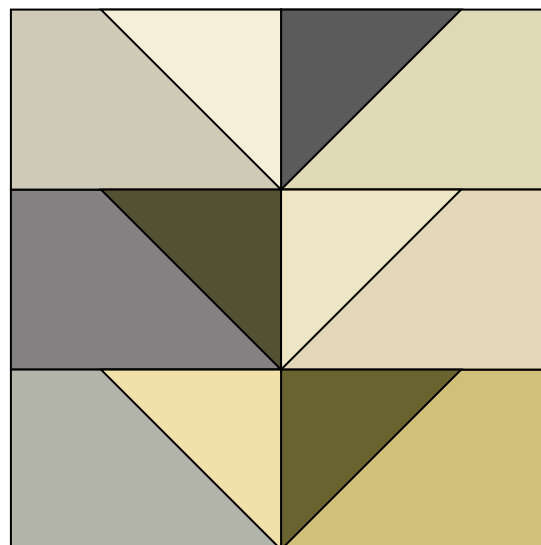
Make 40



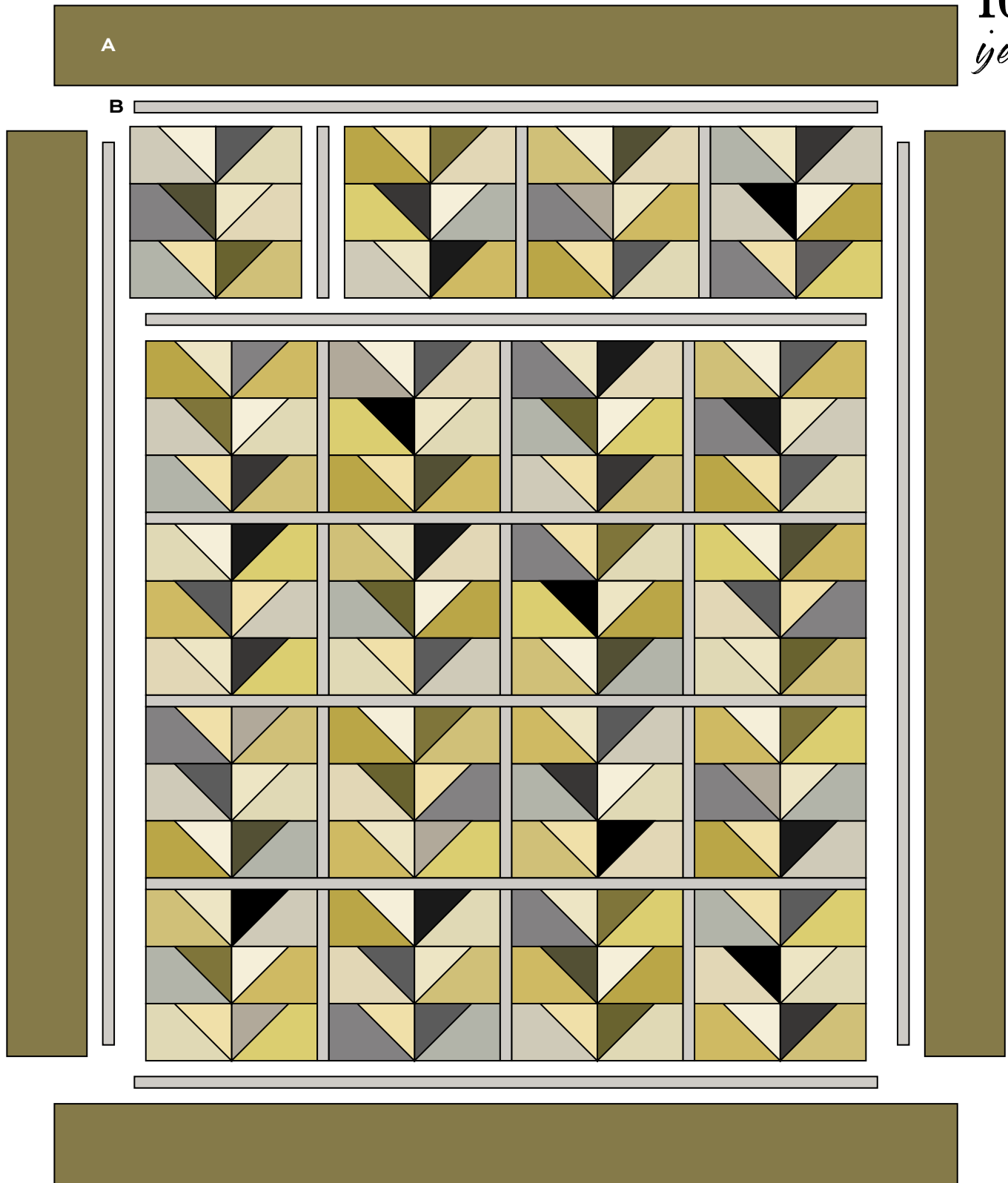
Make 40



Make 20



Block - Make 20



Quilt Diagram

FronD

ANDOVER FABRICS



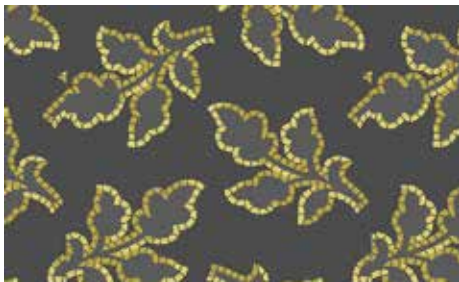
481-C



481-L



481-LC



482-C



482-LC



482-Y



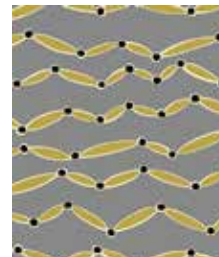
483-C



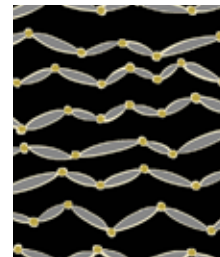
483-L



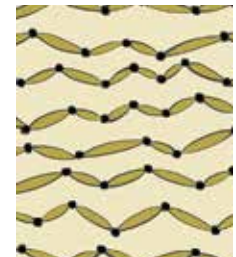
483-Y



484-C



484-K



484-Y



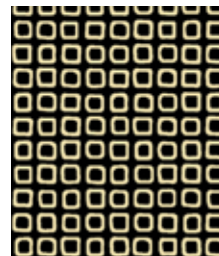
485-C



485-K



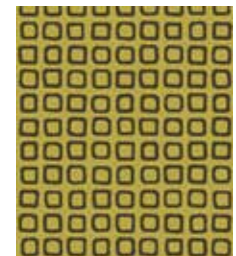
485-Y



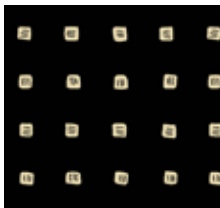
486-K



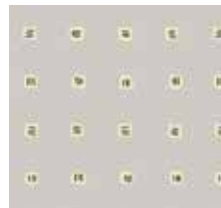
486-L



486-Y



487-K



487-LC



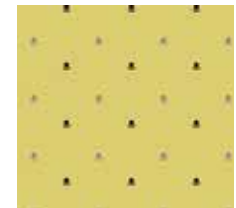
487-Y



488-K



488-L



488-Y

All fabrics are used in quilt pattern. Fabrics shown are 50% of actual size.

andover • makower.uk

Free Pattern Download Available
1384 Broadway New York, NY 10018
Tel. (800) 223-5678 • andoverfabrics.com